

H600, SA2600, and Y400 LCD Replacement Kit Instructions

Warning

The servicing instructions are for use by qualified personnel only. To avoid personal injury, do not perform any servicing unless you are qualified to do so. Refer to all safety summaries prior to performing service.

www.tektronix.com



075-0994-00

Tektronix

Copyright © Tektronix. All rights reserved. Licensed software products are owned by Tektronix or its subsidiaries or suppliers, and are protected by national copyright laws and international treaty provisions.

Tektronix products are covered by U.S. and foreign patents, issued and pending. Information in this publication supersedes that in all previously published material. Specifications and price change privileges reserved.

TEKTRONIX and TEK are registered trademarks of Tektronix, Inc.

Contacting Tektronix

Tektronix, Inc.
14200 SW Karl Braun Drive
P.O. Box 500
Beaverton, OR 97077
USA

For product information, sales, service, and technical support:

- In North America, call 1-800-833-9200.
- Worldwide, visit www.tektronix.com to find contacts in your area.

Service Safety Summary

Only qualified personnel should perform service procedures. Read this *Service Safety Summary* and the *General Safety Summary* before performing any service procedures.

Do Not Service Alone. Do not perform internal service or adjustments of this product unless another person capable of rendering first aid and resuscitation is present.

Disconnect Power. To avoid electric shock, switch off the instrument power, then disconnect the power cord from the mains power.

Use Care When Servicing With Power On. Dangerous voltages or currents may exist in this product. Disconnect power, remove battery (if applicable), and disconnect test leads before removing protective panels, soldering, or replacing components.

To avoid electric shock, do not touch exposed connections.

Kit Description

This document provides instructions to replace the LCD display, the backlight connector, the display cable, and the display cover plate in H600, SA2600, and Y400 instruments.

Products

H600, SA2600, Y400

All serial numbers

Minimum Tool and Equipment List

Required tools and equipment	Part number
Tektronix H600 and SA2600 Service Manual	071-2641-XX
Torque-limiting screwdriver, 12 in-lb (1.3 N-m) range with Torx® T-9, T-10, and T-15 tips	Standard tool
Screwdriver with P0 Pozi tip	Standard tool
1/4 inch nut driver	Standard tool
Small needle-nose pliers or probe to lift connector tabs	Standard tool

Kit Parts List

Quantity	Part number	Description
1 each	075-0994-00	KIT INSTRUCTION FOR REPLACEMENT OF LCD
1 each	119-7495-XX	DISPLAY MODULE; LCD;640 X 480,10.4 IN DIAGONAL, TRANSFLECTIVE,TFT
1 each	131-8334-XX	CONNECTOR HOUSING; 3 POS
1 each	174-5592-XX	CABLE ASSEMBLY; DISPLAY
1 each	407-4926-XX	BRACKET, DISPLAY COVER, AL

Installation Instructions

These instructions are for personnel who are familiar with servicing the product. If you need further details for disassembling or reassembling the product, refer to the appropriate product service manual. Contact your nearest Tektronix, Inc., Service Center or Tektronix Factory Service for installation assistance.



CAUTION. *To prevent static discharge damage, service the product only in a static-free environment. Observe standard handling precautions for static-sensitive devices while installing this kit. Always wear a grounded wrist strap, grounded foot strap, and static resistant apparel while installing this kit.*

Remove

Use the procedures from the *H600 & SA2600 Service Manual* (Tektronix part number 071-2641-XX) to disassemble the instrument to access and remove the LCD display. This service manual can be used to disassemble the Y400, H600, or SA2600 mainframe and remove the LCD display. Dispose of the LCD display, the display cable, and the display cover plate. (See page 5, *Dispose of the Removed LCD Display.*)



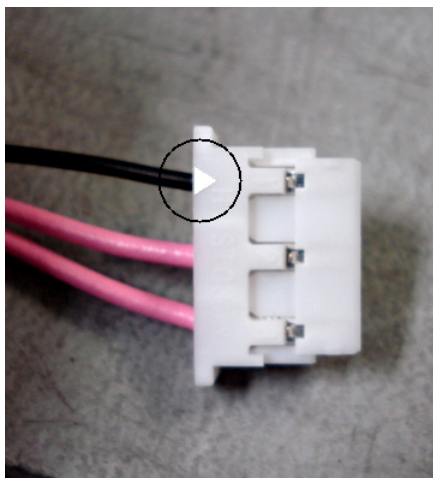
WARNING. To avoid a dangerous electrical shock from hazardous voltages inside the product, always disconnect the power cord from electrical mains before removing covers or performing disassembly/reassembly procedures. Failure to do so may result in serious injury or death.

Change the Backlight Connector on the New LCD Display

1. Position the three-wire back light inverter cable (two pink wires, one black wire) so you can see the small metallic latch on the individual wire receptacles.



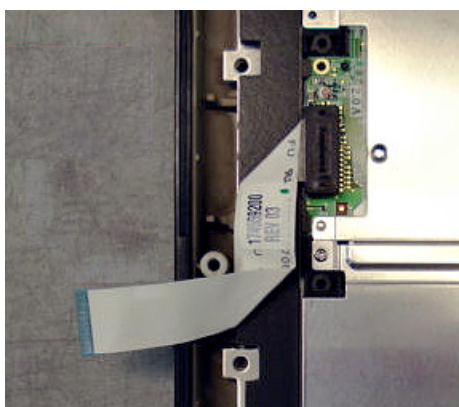
2. Lift the white plastic arm on the black wire while gently pulling on the wire. The wire should pull out with little effort.
3. Repeat for the remaining two pink wires. Dispose of the connector.
4. Position the new connector (Tektronix part number 131-8334-XX) so that the white plastic arm mechanism is towards you (you can see the hole where the metal catch goes).



5. Insert the black wire in connector position 1 (marked with a small triangle). Insert the wire with the metal latch facing towards you until the latch engages.
6. The two pink wires are interchangeable and can go in either of the other two connector positions. Insert the pink wires with the metal latch facing towards you until the latch engages.
7. Gently pull on the wires to check that they have locked correctly into the connector.

Install New Display Cable on New LCD

1. Insert new display cable (Tektronix part number 174-5592-XX) into the LCD display connector.
2. Bend/route the display cable as shown.



Install the New LCD Display and New Cover Plate

1. Install the new LCD display in the instrument front case.
2. Align the display cover plate (Tektronix part number 407-4926-XX) with the front case so that the foam is facing down and the notch in the corner of the cover plate is in the lower right corner (where ribbon cable and backlight pink and black cable are located).



CAUTION. *Make sure that the backlight cable (cable with pink wires) is not pinched under the display cover.*

3. Attach the LCD display and cover plate to the front case with 14 T15 screws. Torque to 8 in.-lbs.

Reassemble the Instrument

Reverse the removal procedure from the *H600 & SA2600 Service Manual* to reassemble the instrument mainframe.

Calibrate the Instrument

No calibration is necessary.

Dispose of the Removed LCD Display

Properly dispose of the LCD display that you removed.

Equipment Recycling

Production of this equipment required the extraction and use of natural resources. The equipment may contain substances that could be harmful to the environment or human health if improperly handled at the product's end of life. In order to avoid release of such substances into the environment and to reduce the use of natural resources, we encourage you to recycle this product in an appropriate system that will ensure that most of the materials are reused or recycled appropriately.

Mercury Notification

This product uses an LCD backlight lamp that contains mercury. Disposal may be regulated due to environmental considerations. Please contact your local authorities or, within the United States, refer to the E-cycling Central Web page (www.eiae.org) for disposal or recycling information.

End of Document